

# Image captions



## Image



## File name

CATHAY-INDUSTRIES\_Knokke\_01.jpg

## Image caption

The town administration of the Belgian seaside resort Knokke-Heist assigned Urba-Style, Tournai, with the redesign of the Lichttorenplein square surrounding the tourist information office.

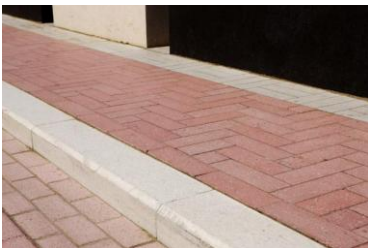
Image: CATHAY INDUSTRIES



CATHAY-INDUSTRIES\_Knokke\_02.jpg

Architectural concrete which was coloured using pigments by manufacturer CATHAY INDUSTRIES was used not only for the pavement, but also for other elements such as the fountain.

Image: CATHAY INDUSTRIES



CATHAY-INDUSTRIES\_Knokke\_03.jpg

Synthetic iron oxide pigments of the FERROTINT range create the bright pink colour dominant in the floor design, which picks up on the brick façade of the tourist information office.

Image: CATHAY INDUSTRIES



CATHAY-INDUSTRIES\_Knokke\_04.jpg

Safety first: Clearly visible symbols increase safety for cyclists and mark corresponding areas.

Image: CATHAY INDUSTRIES



CATHAY-INDUSTRIES\_Knokke\_05.jpg

The iron oxide pigments from CATHAY INDUSTRIES have excellent weathering as well as light fastness properties and therefore withstand the coastal climate along the dyke from Zeebrugge to Knokke.

Image: CATHAY INDUSTRIES

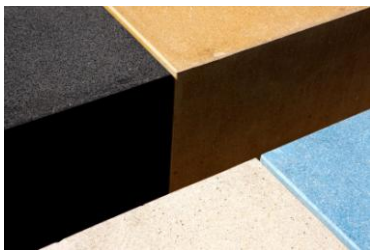
# Image captions



CATHAY-INDUSTRIES\_Knokke\_06.jpg

A highlight is the colourful concrete blocks at the head and foot of the square. They separate it from the road and, with their elevations on the beachside, also serve as seating for visitors and residents.

Image: CATHAY INDUSTRIES



CATHAY-INDUSTRIES\_Knokke\_07.jpg

Here, iron oxide pigments were used to produce the black and yellow while cobalt blue produces a colour that radiates with the nearby sea.

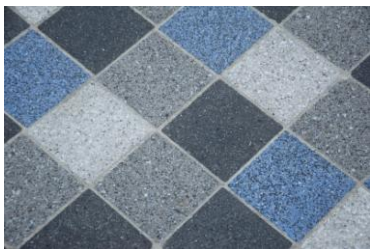
Image: CATHAY INDUSTRIES



CATHAY-INDUSTRIES\_Knokke\_08.jpg

Concrete tiles in various shades of grey were used in the redesign of Rubensplein, another point of attraction on the beach promenade. Here, individual blue tiles add pops of colour.

Image: CATHAY INDUSTRIES



CATHAY-INDUSTRIES\_Knokke\_09.jpg

The marbling of the tiles is caused by polished concrete. Black stones are added to the blue-coloured concrete and come to the surface after polishing. The result is an interesting structure of the tiles. This way, even large surfaces do not appear monotonous.

Image: CATHAY INDUSTRIES